



Schenectady City School District

Mosaic Associates Architects

Kersten Lorcher, AIA

Hamlin Design Group

Turner Construction

Larry E. Tune, PM

21st of October, 2015



CAPITAL PROJECT UPDATE | Outline

- Group A Projects Status Update:
Keane Elementary
SCLA (Boiler Rm., Code Def. Work)
Paige Elementary
- Group B Projects Status Update:
Mont Pleasant Middle School
Oneida Middle School
- Group C Projects Status Update:
Central Park Middle School
Howe Elementary
Van Corlaer Elementary
- Group D Projects Status Update:
Pleasant Valley Elementary
Hometown Health Center @ MPMS, SHS



- Next Steps:
Critical & Milestone Dates



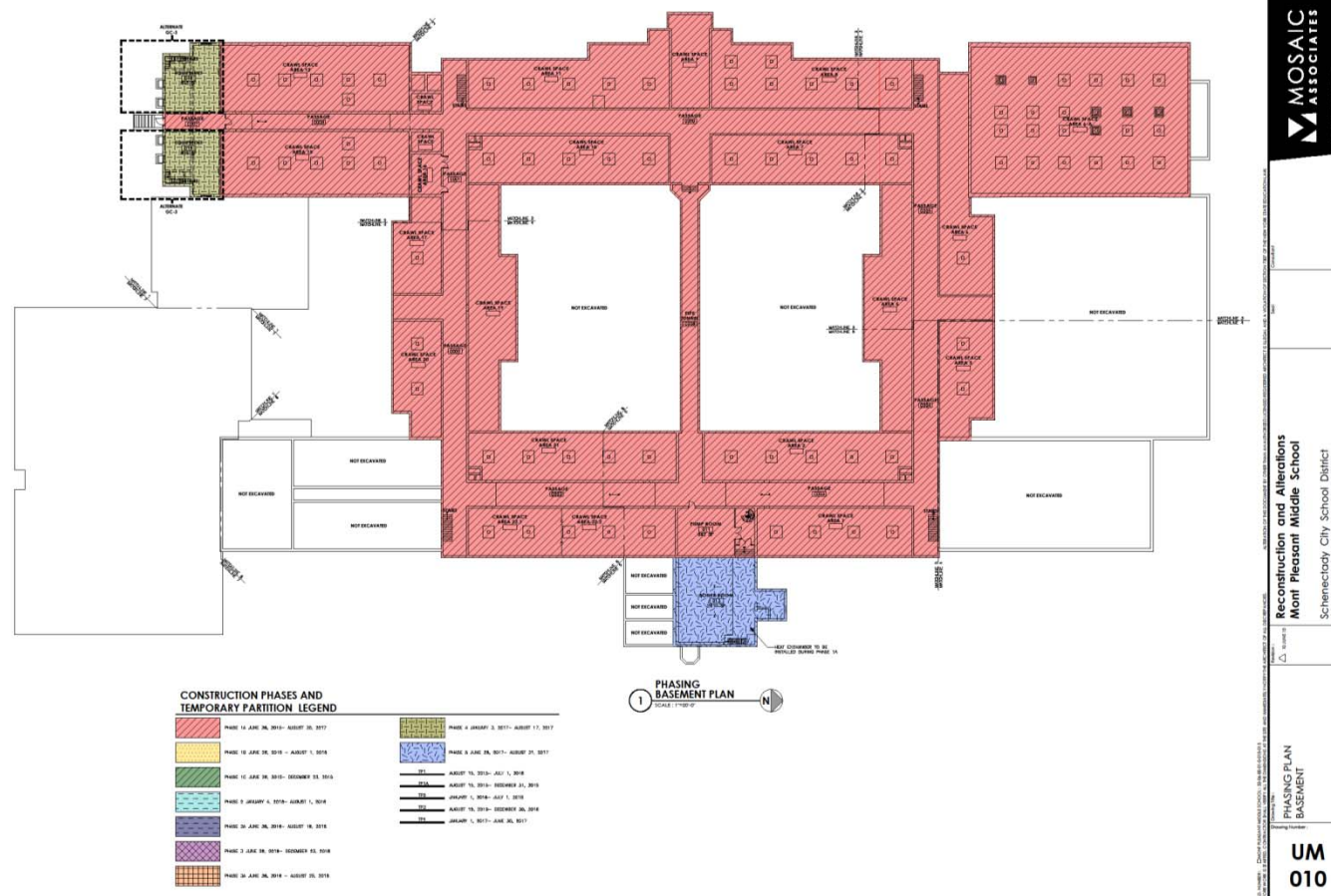
CAPITAL PROJECT | Group A

- Group A Projects Status Update:
 - Keane Boiler Room Reconstruction
 - 11 Month Warranty Inspection
 - SCLA Boiler Rm. Reconstruction
 - 11 Month Warranty Inspection
 - SCLA Fence/Gate & Emergency/Exit Light Modifications
 - Final Completion & Closeout Anticipated by Oct. 30th
 - **Paige Elementary***
 - Final Completion & Closeout Anticipated by Oct. 30th



CAPITAL PROJECT | Group B

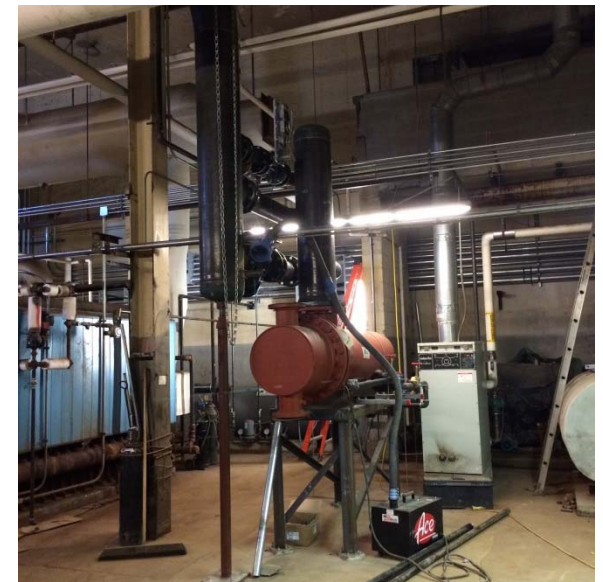
- MPMS – Basement/Crawl Space/Boiler Rm





PROGRESS UPDATE | MPMS

- MPMS – Basement/Crawl Space/Boiler Rm

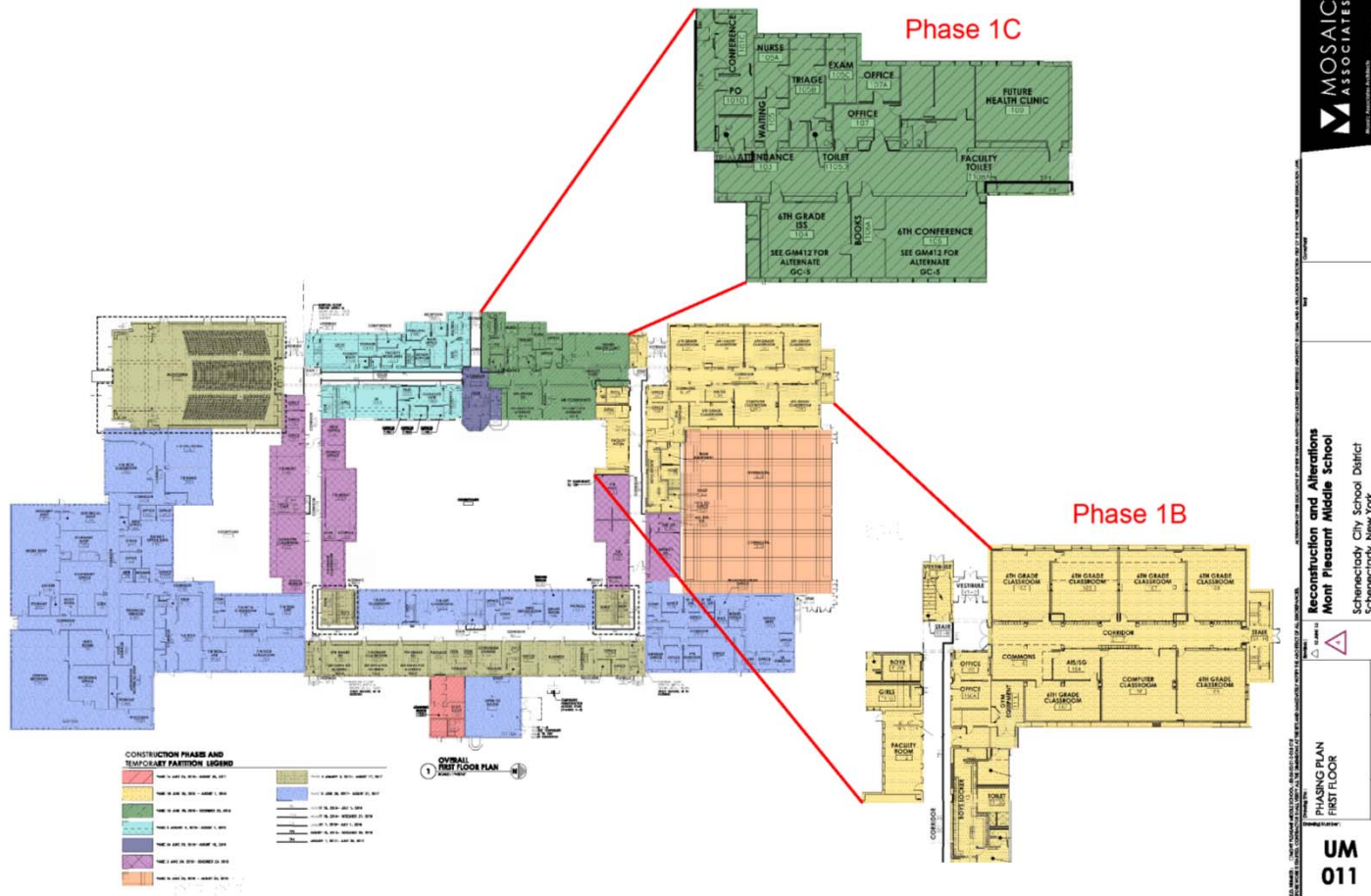


Hot Water Distribution Pipe / Temporary Heat Exchanger



CAPITAL PROJECT | Group B

- MPMS – 1st Floor

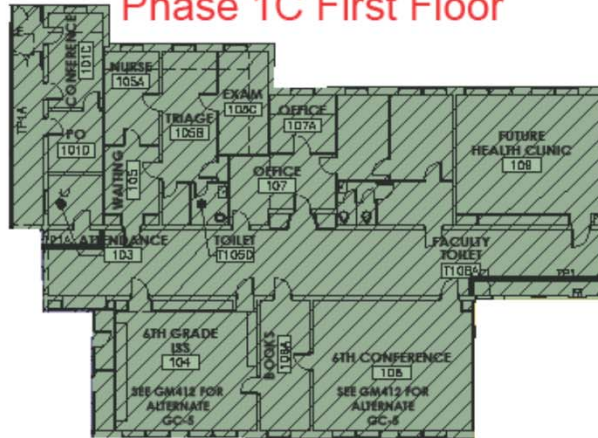




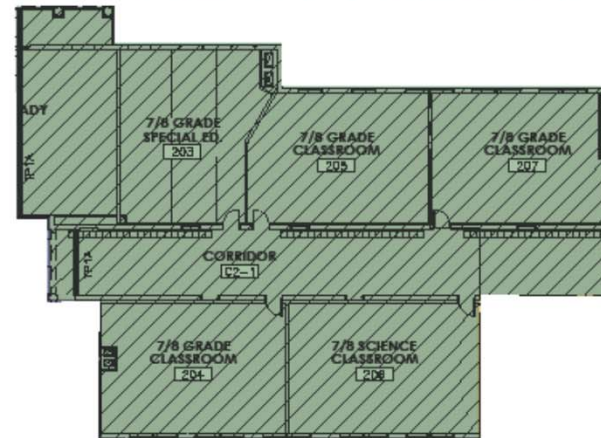
CAPITAL PROJECT | Group B

- MPMS – Phase 1C (All Floors)

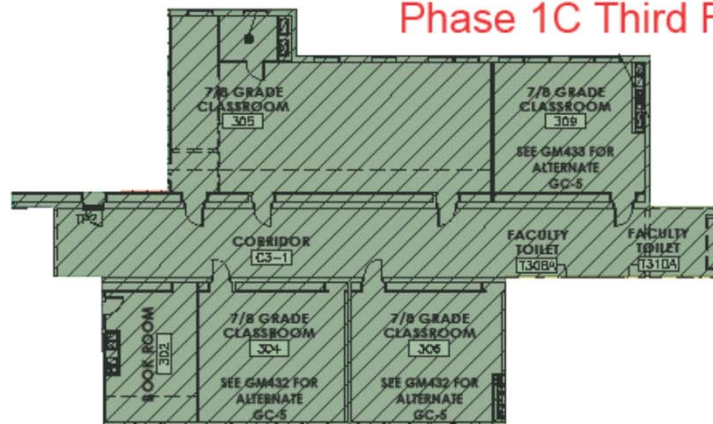
Phase 1C First Floor



Phase 1C Second Floor



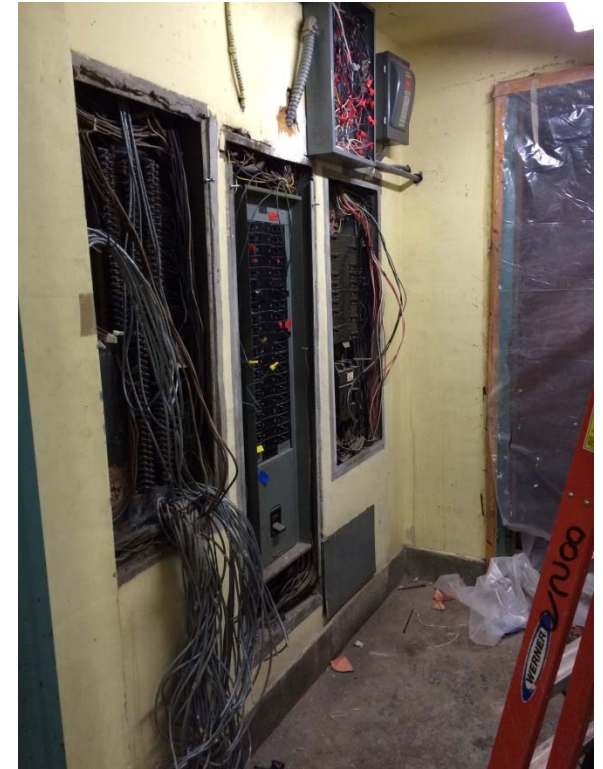
Phase 1C Third Floor





PROGRESS UPDATE | MPMS

- MPMS – 1st Floor



Gang Bathroom Demo / Area Electrical Panel Demo



PROGRESS UPDATE | MPMS

- MPMS – 1st Floor (cont.)



Phase 1B Demo



CAPITAL PROJECT | Group B

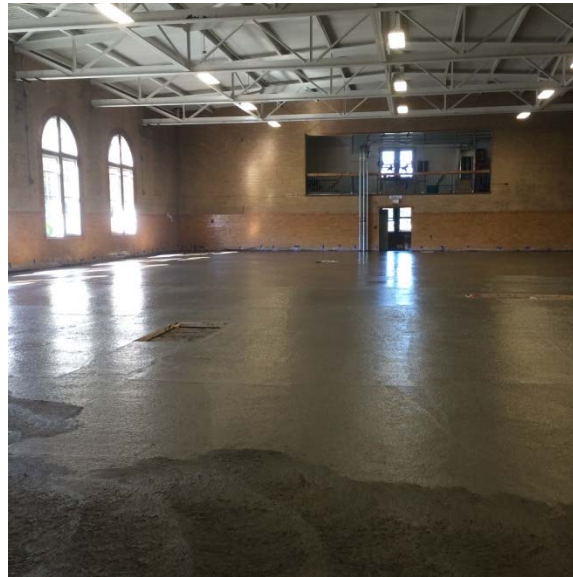
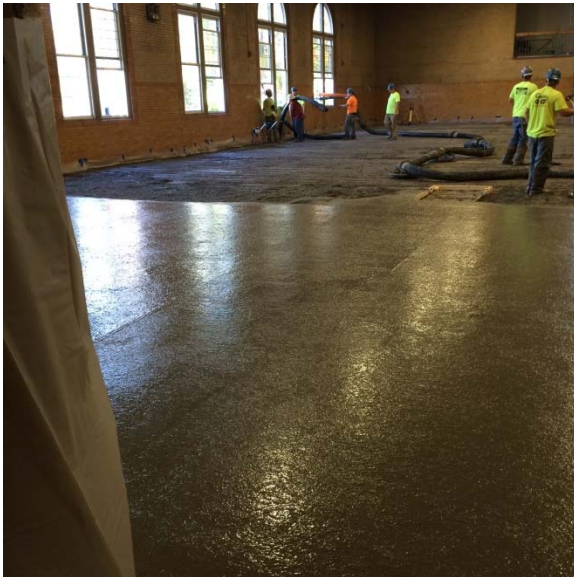
- MPMS – 2nd Floor





PROGRESS UPDATE | MPMS

- MPMS – 2nd Floor



Phase 1B - Floor Topping Slab Pour



PROGRESS UPDATE | MPMS

- MPMS – 2nd Floor

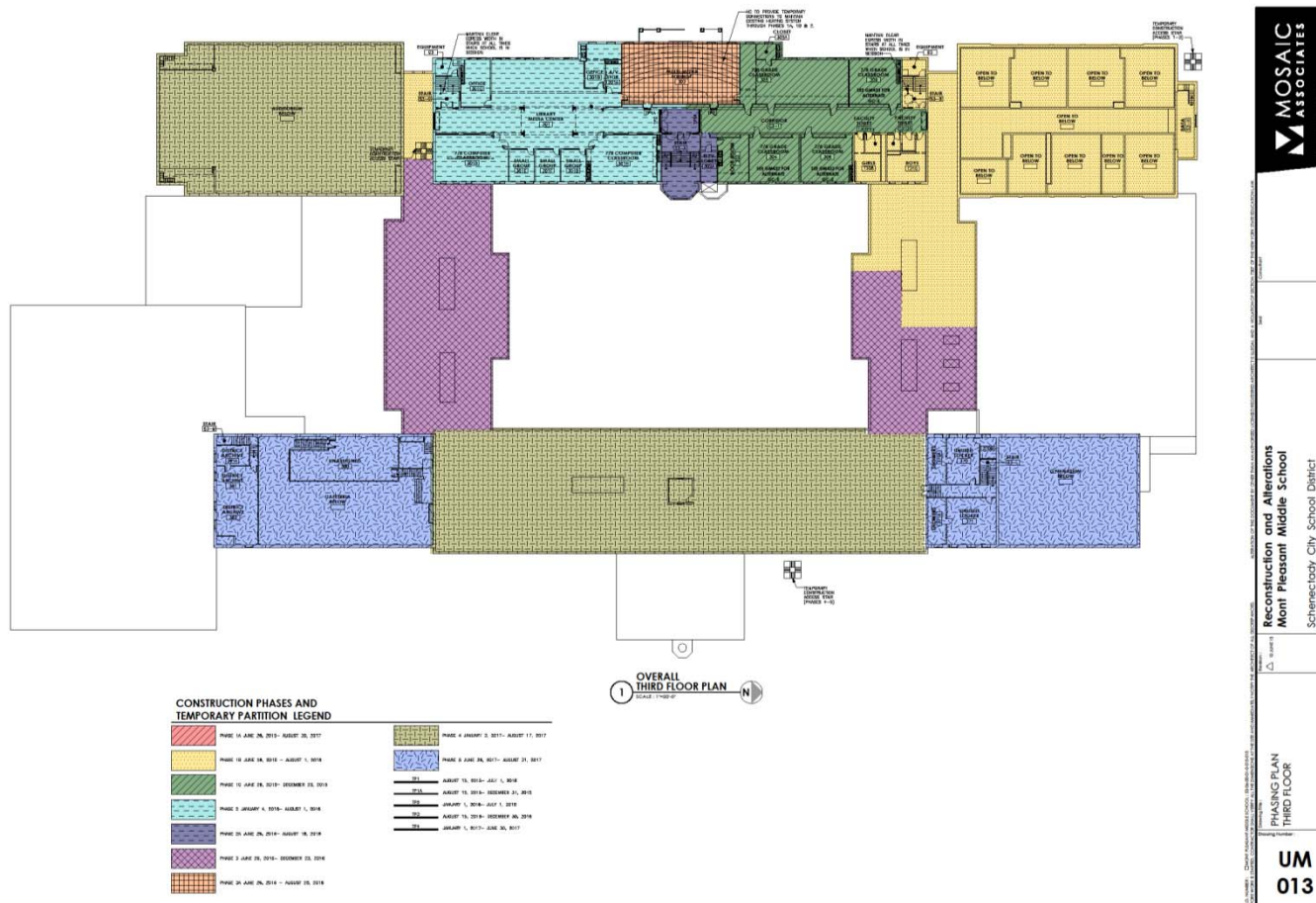


Duct Rough-In / Floor Duct Chase in Phase 1C



CAPITAL PROJECT | Group B

- MPMS – 3rd Floor





PROGRESS UPDATE | MPMS

- MPMS – 3rd Floor



New Electric – IDF2 Room / Duct Chase Rough-In – Phase 1C



PROGRESS UPDATE | MPMS

- MPMS – 3rd Floor

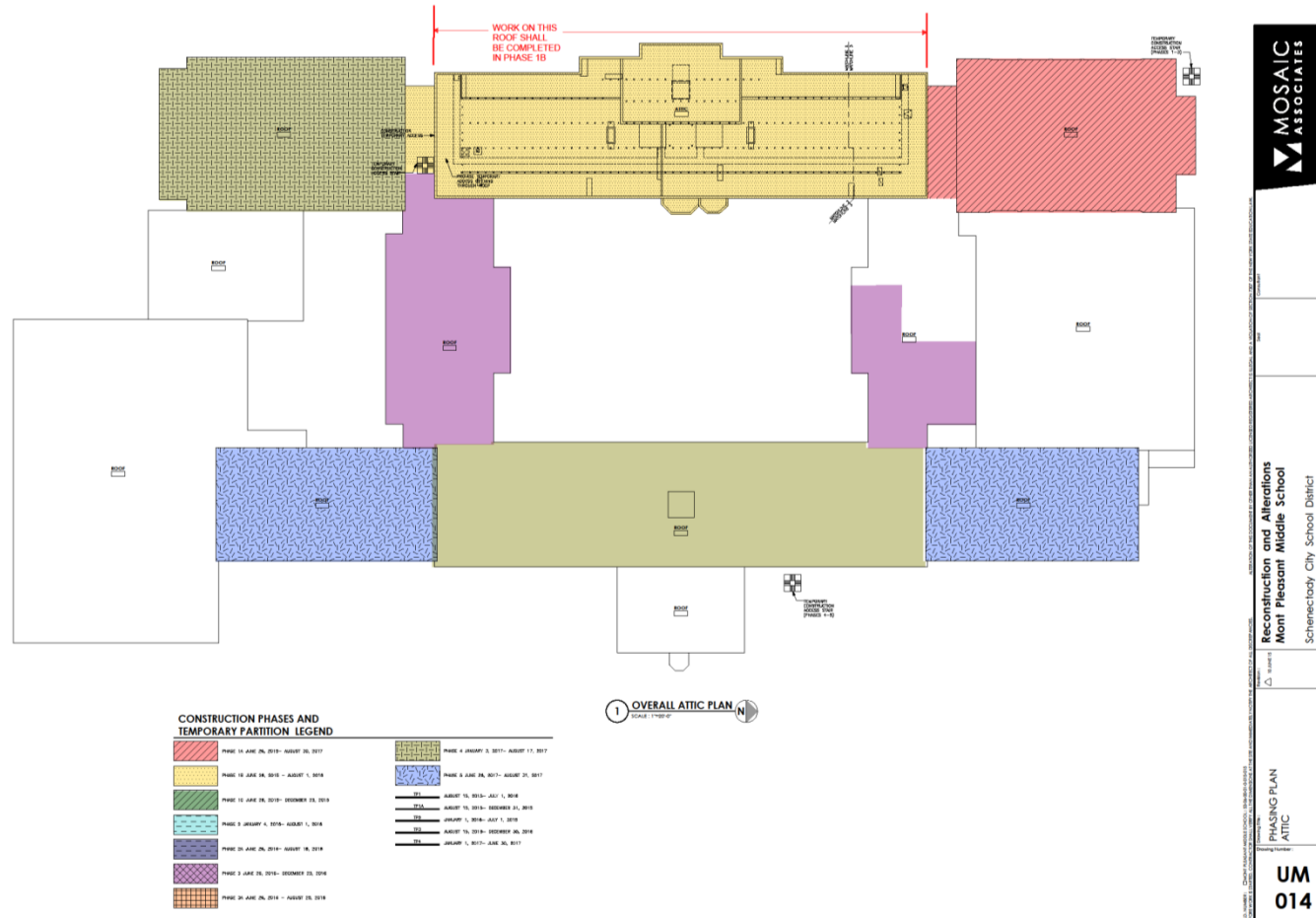


Gang Bathroom / Classroom / Electrical Closet Demo – Phase 1B



CAPITAL PROJECT | Group B

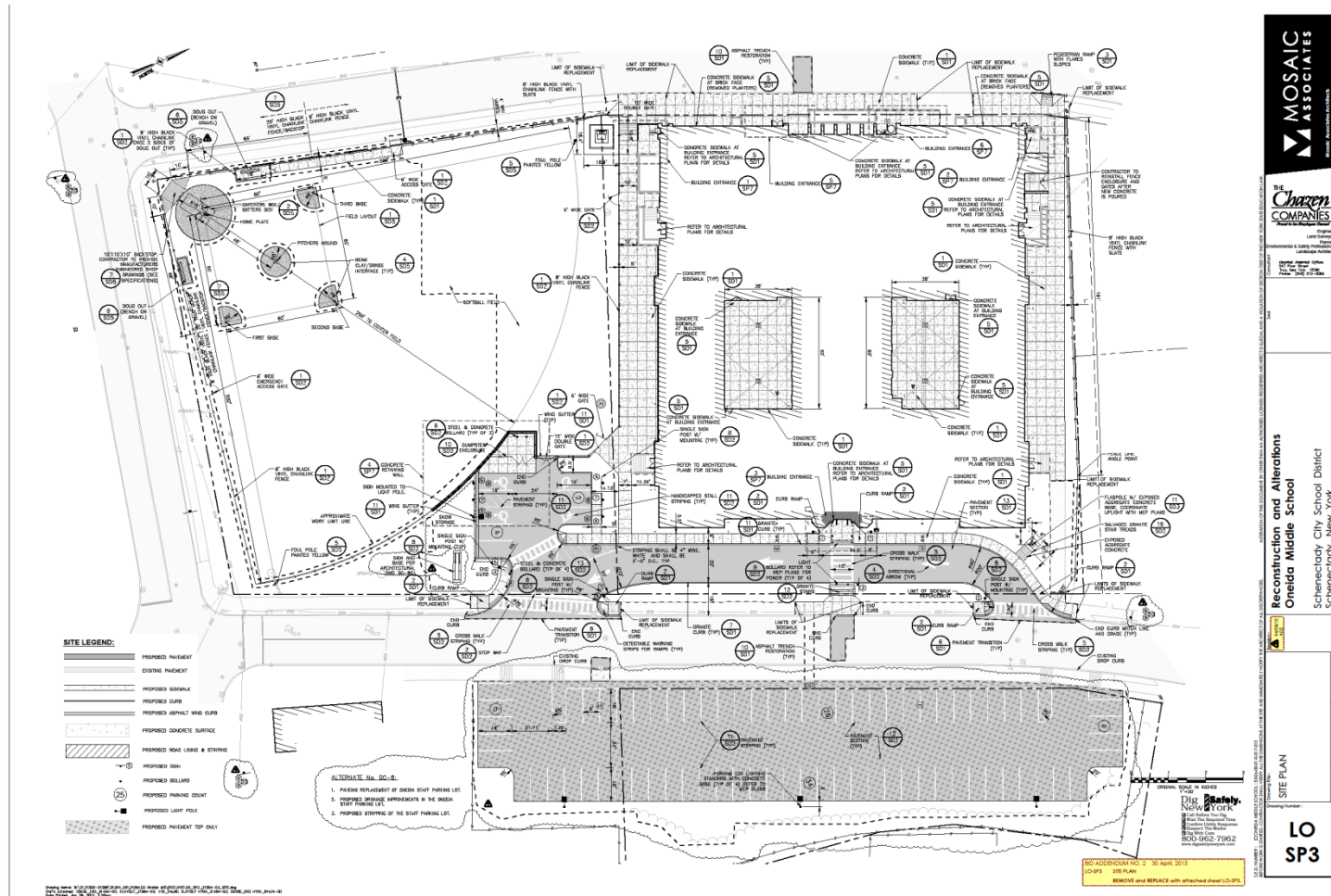
- MPMS – Attic





CAPITAL PROJECT | Group B

- OMS – Site Plan





PROGRESS UPDATE | OMS

- OMS – Site



South Courtyard **before** & **after** demo & excavation



PROGRESS UPDATE | OMS

- OMS – Site



Perimeter Drainage & Storm Drain Structure Install

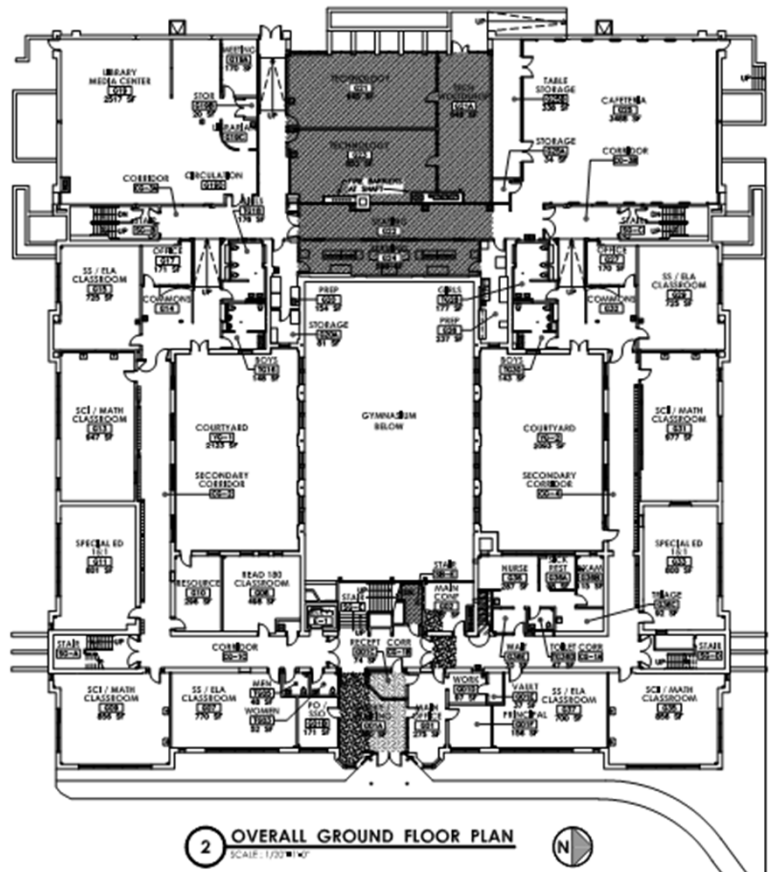


- # New Natural Gas Line Installation



CAPITAL PROJECT | Group B

- OMS – Ground Floor Plan

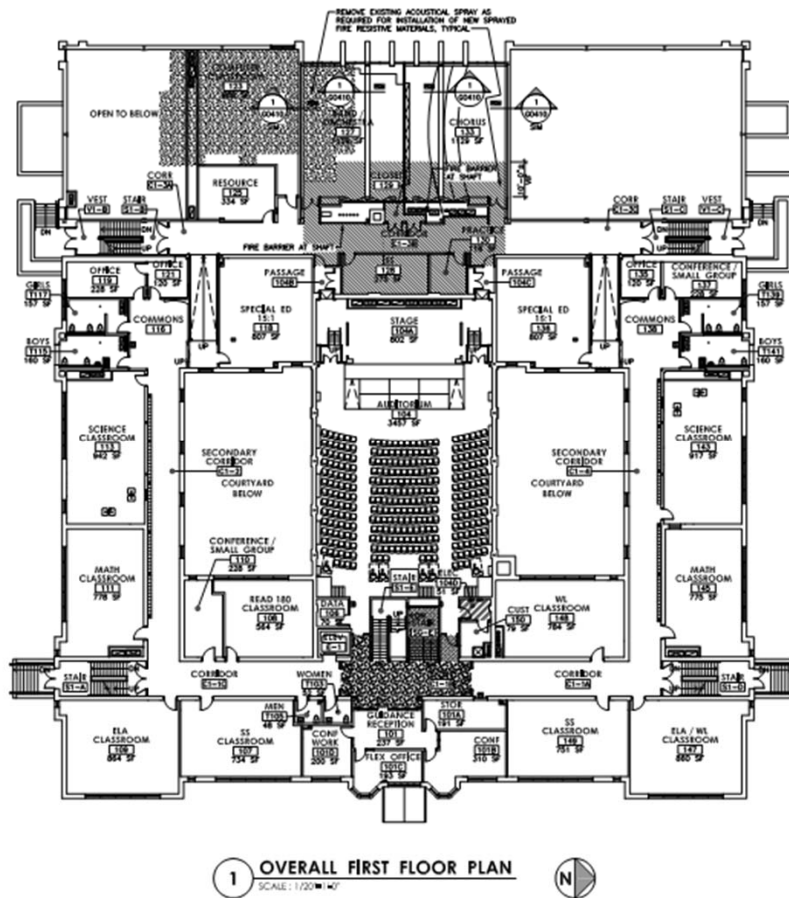


Main Lobby Demo



CAPITAL PROJECT | Group B

- OMS – First Floor Plan

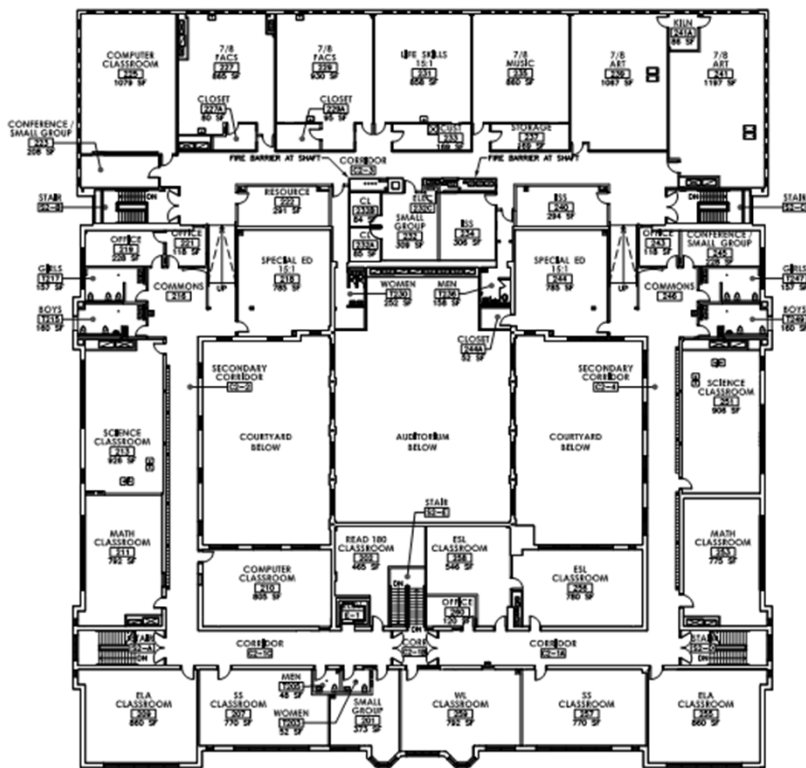


Demolition of East Stairwell



CAPITAL PROJECT | Group B

- OMS – Second Floor Plan



2 OVERALL SECOND FLOOR PLAN
SCALE: 1/20" = 1'-0"

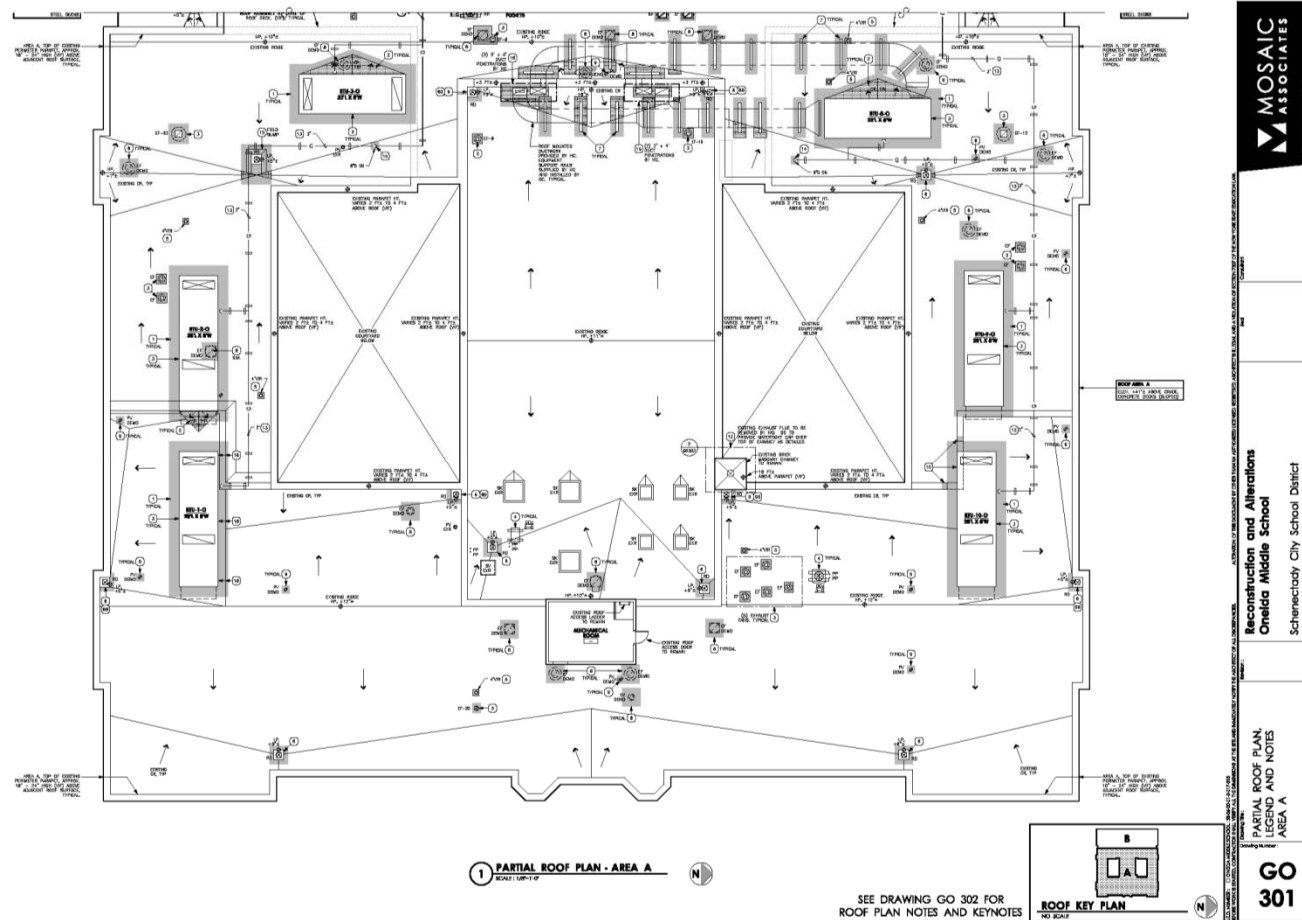


2nd Floor Classroom Reno



CAPITAL PROJECT | Group B

- OMS – Roof Plan





CAPITAL PROJECT | Group B

- OMS – Roof Photos



New Roof Curbs & Exhaust Fan Install



CAPITAL PROJECT | Group C

- Central Park MS drawings and Specifications are currently with SED awaiting approval.
- Van Corlaer ES drawings and specifications are currently with SED awaiting review.
- Howe ES DD drawings and specifications complete. Anticipated submission date to SED 30 October 2015.





CAPITAL PROJECT | Group D

- PVES – Boiler Room & Misc. Code Def. Items



Steam Boiler & Hot Water Heater from Oneida Middle School



CAPITAL PROJECT | Group D

- Hometown Health Centers
 - MPMS – Drawings with SED pending approval. Project has been bid and is currently in the contracting stage.
 - SHS – Drawings have been approved by SED. Project is anticipated to go out to bid this week.





CAPITAL PROJECT UPDATE | Next Steps & Milestones

- Winter 2015 Closeout of Paige ES roof, SCLA fence & lighting, PVES boiler room.
- Spring 2016 Anticipate SED review comments for CPMS, HOWE and VCES.
- Spring 2016 Anticipate bidding/Awarding CPMS, HOWE and VCES Projects.
- Fall 2016 Reopen Oneida Middle School; Open Mt Pleasant MS & Central Park MS with 6th, 7th & 8th Grades.
- Summer 2017 Construct New bus drop off loop at MPMS.



THANK YOU | Any Questions?

